



- $\emptyset$  Backing Hole 8mm or customization
- Open area 12% or 19%
- Groove width 3mm
- Reflective surface width 5mm
- Available with M-perforation and T-perforation
- Other Siuakustik Planks specification: 3/1.5, 6/2, 9/2, 12/4, 13/3, 28/4, 29/3, 30/2, 59/5, etc.

Standard melamine finish

- Beech, cherry, walnut, oak, maple, ash, pear, white, etc.

Standard wood veneer finish

- Beech, cherry, walnut, oak, maple, ash

Special finish

- On request

Base material

- Fire-resistant MDF & Not fire-resistant eco MDF

Special base material

- On request

Acoustic felt

- Black fleece glued on the back of the panel(optional)

Formats

- 2440mmx128mm

Tolerance

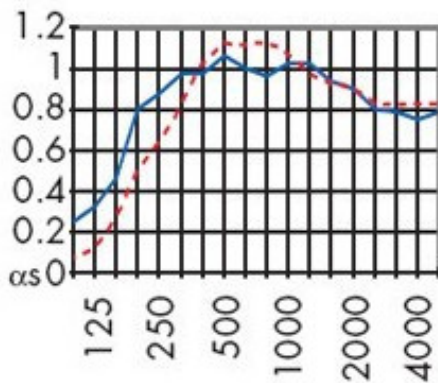
- Width +/- 0.3mm, Length +/- 0.3mm

Special finish

- On request

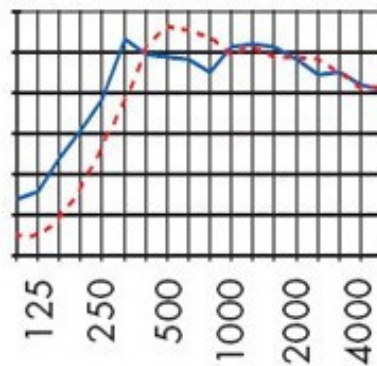
### Product Sound Absorption Frequency and Coefficient

5/3 M-12 %



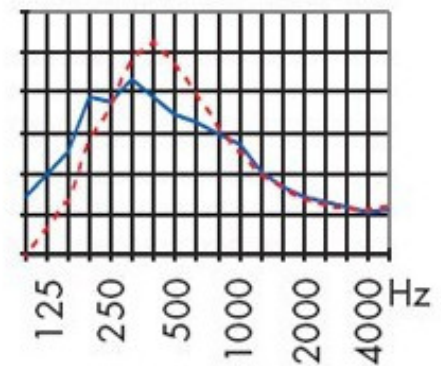
$\alpha_w$	Euro	NRC
0,90 L	A	0,89
0,85 M	B	0,89

5/3 M-19 %



$\alpha_w$	Euro	NRC
1,00	A	0,93
0,85 M	B	0,91

5/3 T



$\alpha_w$	Euro	NRC
0,45 LM	D	0,62
0,45 LM	D	0,65